



CENTRAL  POOL

---

custom made pools producer



## ABOUT COMPANY

Our company has been involved in the manufacture and planning of swimming pools for more than 20 years. When producing, we follow the latest trends, which we include in the manufacturing process. The high quality of our products is ensured by the most modern technological equipment and qualified craft work. An individual approach and above standard customer service is confirmed by thousands of our satisfied customers throughout the whole of Europe.

## ÜBER DAS UNTERNEHMEN

Unsere Gesellschaft beschäftigt sich seit mehr als 20 Jahren mit der Herstellung und Planung von Schwimmbecken. Bei der Herstellung der Schwimmbecken verfolgen wir die aktuellen Trends, welche wir anschließend in den Produktionsprozess einbeziehen. Die hohe Qualität unserer Erzeugnisse gewährleisten wir mit Hilfe modernster technologischer Ausstattung und qualifizierter handwerklicher Arbeit. Tausende zufriedene Kunden in ganz Europa bestätigen die individuelle Herangehensweise und den über den Standard hinausgehenden Kundenservice.

*Pavel Šponar*

CLASSIC TYPE	4 - 5
UNIQUE TYPE	6 - 7
OVERFLOW POOL EVO <small>(NEW FOR 2018)</small>	8 - 9
UNIQUE STRONG TYPE	10 - 11
STAIRCASES AND ACCESSORIES TREPPE UND ZUBEHÖR	12 - 19
SAFETY ROLL COVER SYSTEM ROLLABDECKUNG	20 - 21
SHAFTS AND BUFFER TANKS TECHNIKSCHÄCHTE	22 - 23









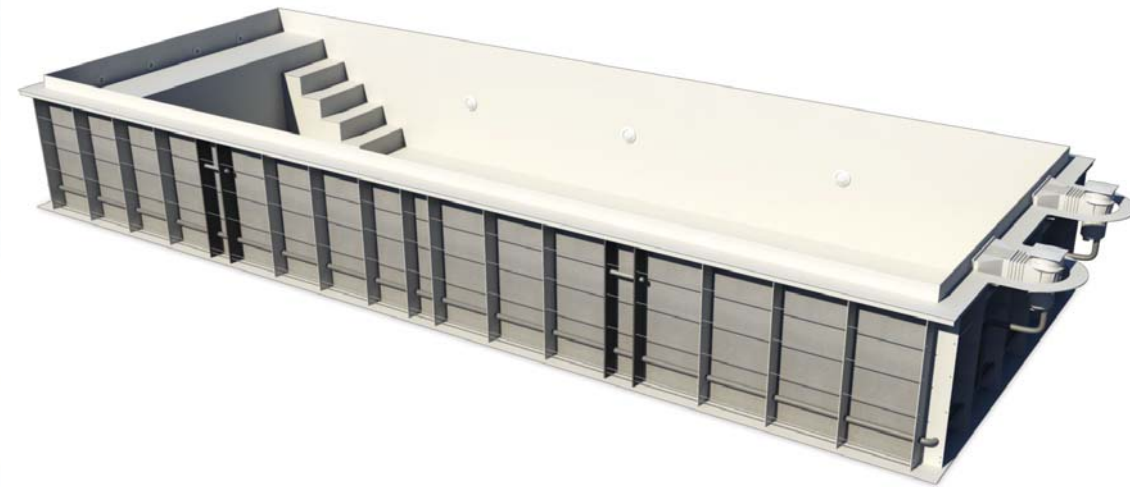


# CLASSIC TYPE



NAME	
≡	SKIMMER
≡	SKIMMER PLUS
≡	OVERFLOW SMART
≡	OVERFLOW PLUS

POOL FORM	
■	RECTANGULAR
■	R800
○	OVAL
◐	INDIVIDUAL



- Wall thickness 8 mm, floor thickness 8 mm
- Construction material Polystone® UV-stabilized
- Vertical reinforcements
- Reinforcement iron bars
- Reinforced pool handling point
- Wooden frame for transport and support during installation

- Beckenwände 8 mm, Boden 8 mm
- Konstruktionsmaterial Polystone® UV stabilisiert
- Statische Versteifung
- Stahlarmierung
- Verstärkte Versteifung für Manipulation
- Holzkreuz hält die Form während des Transportes und der Bauarbeiten



WHITE    GREY    ANTHR.    SAND    STEEL B.    LIGHT B.    CARIB. B.





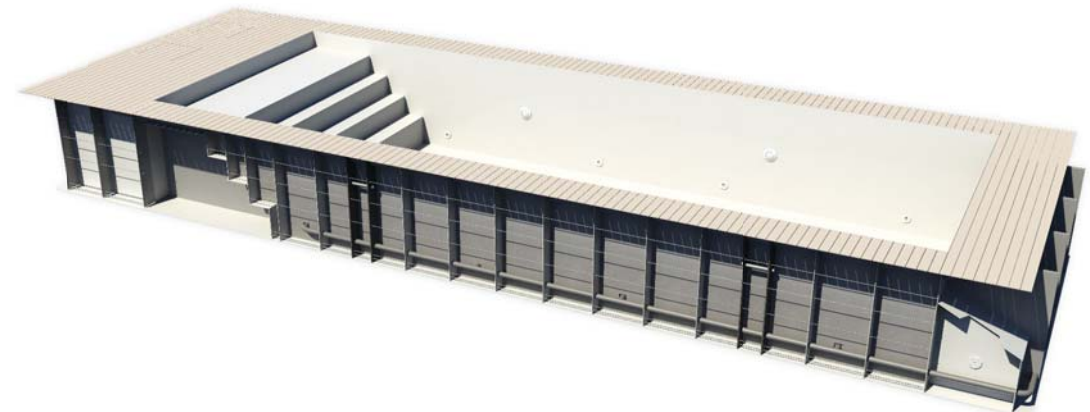


# UNIQUE TYPE



NAME	
≡	OVERFLOW STONE
≡	OVERFLOW EXCLUSIVE
≡	OVERFLOW INFINITE
≡	OVERFLOW STONE EVO

POOL FORM	
□	RECTANGULAR
<del>⊗</del>	<del>R800</del>
<del>⊗</del>	<del>OVAL</del>
<del>⊗</del>	<del>INDIVIDUAL</del>



- Wall thickness 8 mm, floor thickness 8 mm
- Construction material Polystone® UV-stabilized
- Vertical reinforcements
- Reinforcement iron bars
- Reinforced pool handling point
- Wooden frame for transport and support during installation

- Beckenwände 8 mm, Boden 8 mm
- Konstruktionsmaterial Polystone® UV stabilisiert
- Statische Versteifung
- Stahlarmierung
- Verstärkte Versteifung für Manipulation
- Holzkreuz hält die Form während des Transportes und der Bauarbeiten



WHITE    GREY    ANTHR.    SAND    STEEL B.    LIGHT B.    CARIB. B.



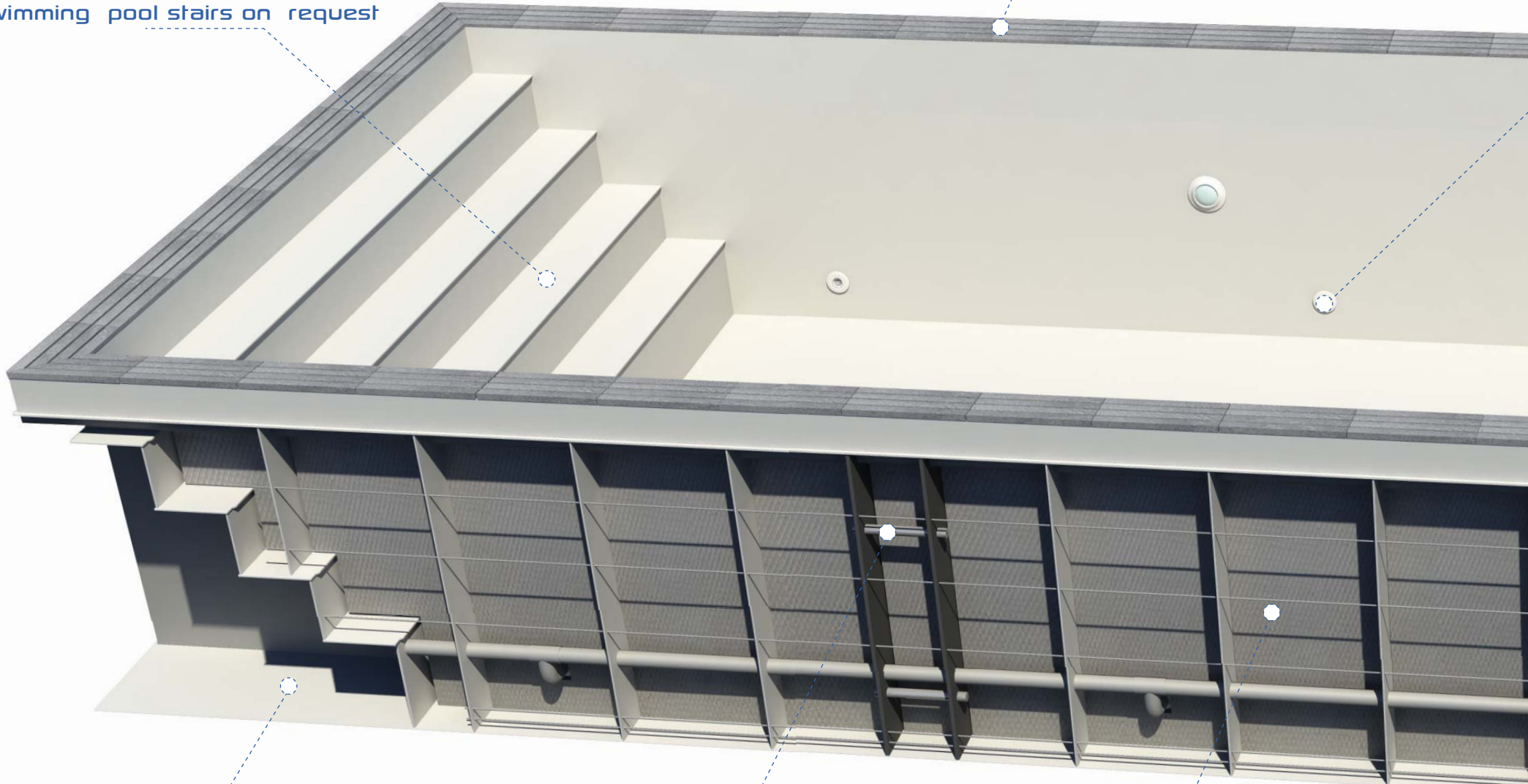
Swimming pool stairs on request

Natural stone EVO line

Wall thickness 8 mm, floor thickness 8 mm

XPS Insulation thickness 20 or 40 mm / walls and bottom

Reinforced pool handling point





# OVERFLOW STONE EVO

new for 2018











# UNIQUE STRONG TYPE



NAME	
☞	SKIMMER STRONG
☞	OVERFLOW SMART STRONG
☞	OVERFLOW STONE STRONG
☞	OVERFLOW EXCLUSIVE STRONG

POOL FORM	
☐	RECTANGULAR
✗	R800
○	OVAL
⊗	INDIVIDUAL



- Wall thickness 50 mm, floor thickness 50 mm
- Multipowered panel UV-stabilized
- Horizontally placed steel profiles
- Steel vertical reinforcements
- Self-supporting construction (for in ground installation)
- Wooden frame for transport and support during installation

- Beckenwände 50 mm, Boden 50 mm
- Multipowered Platte UV stabilisiert
- Statische Versteifung mit Stahlprofilen
- Stahlstrebe
- Konstruktion ist zum Erdeinbau ohne Betonhinterfüllung geeignet
- Holzkreuz hält die Form während des Transportes und der Bauarbeiten



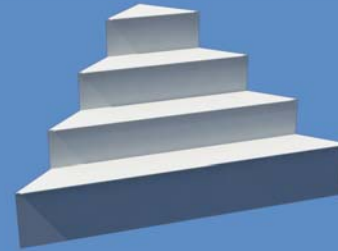
WHITE SAND LIGHT B. BLACK







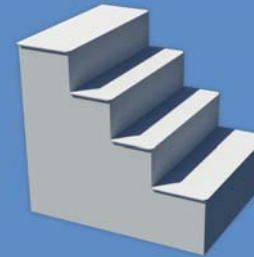
# INSIDE STAIRS



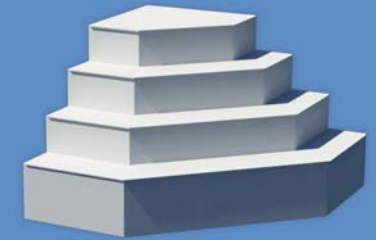
≈ STRAIGHT /  
ECKTREPPE GERADE



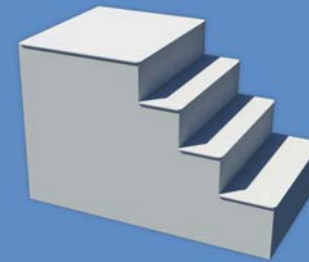
≈ ROUNDED /  
ECKTREPPE ABGERUNDET



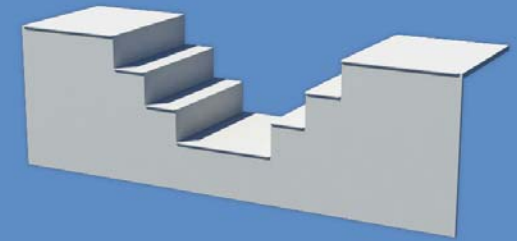
≈ DESIGN /  
ECKTREPPE DESIGN



≈ SQUARED /  
ECKTREPPE ECKIG



≈ DESIGN WITH SHALLOW AREA /  
ECKTREPPE DESIGN  
MIT FLACHBEREICH



≈ DESIGN DUO /  
DESIGN DUO



WHITE



GREY



ANTHR.



SAND



STEEL B.



LIGHT B.



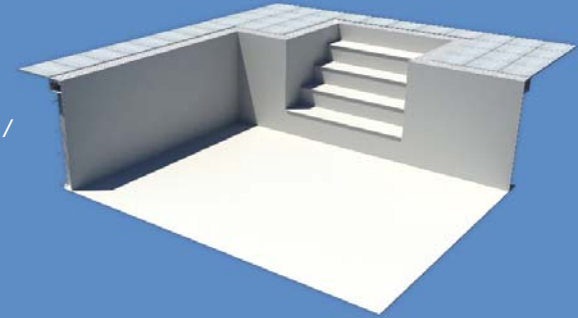
CARIB. B.



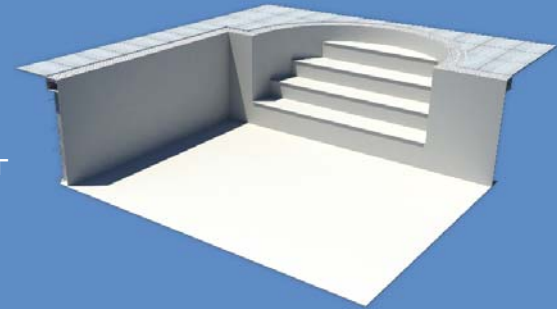


# OUTSIDE STAIRS

≡ OUTSIDE STAIRS RECTANGLE /  
AUSSEN TREPPE ECKIG



≡ OUTSIDE STAIRS ROUNDED /  
AUSSEN TREPPE ABGERUNDET



≡ OUTSIDE STAIRS AMPHI /  
AUSSEN TREPPE AMPHI



WHITE



GREY



ANTHR.



SAND



STEEL B.



LIGHT B.



CARIB. B.

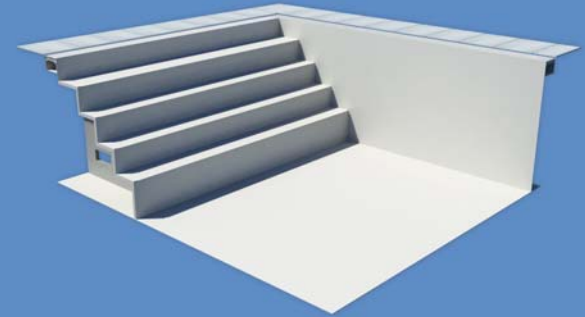




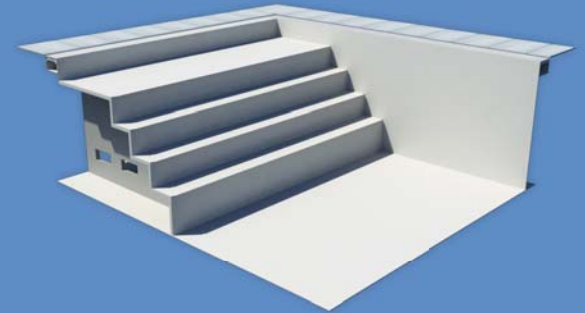


# ALL OVER AND LIMITED STAIRS

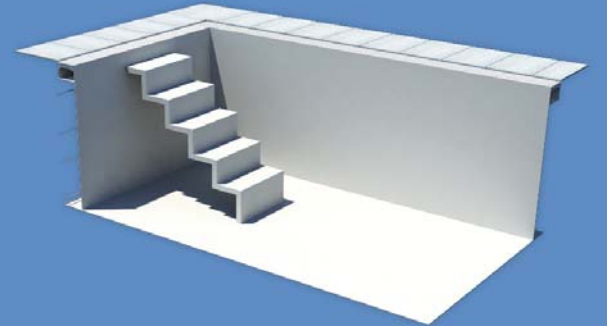
☞ STEPS ALL OVER SHORT SIDE /  
TREPPE ÜBER GANZE BREITE



☞ STEPS ALL OVER SHORT SIDE  
WITH SHALLOW AREA /  
TREPPE ÜBER GANZE BREITE  
MIT FLACHBEREICH



☞ INNER STAIRS LIMITED /  
INNEN TREPPE LIMITED



WHITE



GREY



ANTHR.



SAND



STEEL B.



LIGHT B.



CARIB. B.



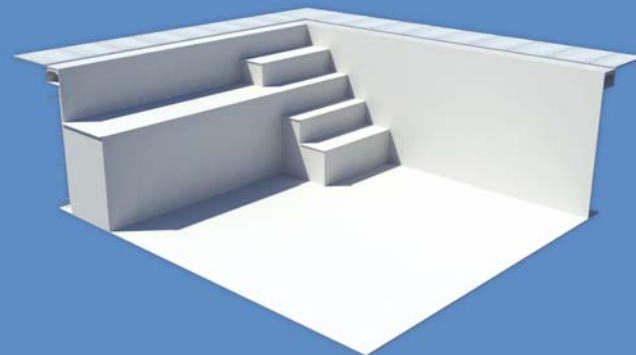




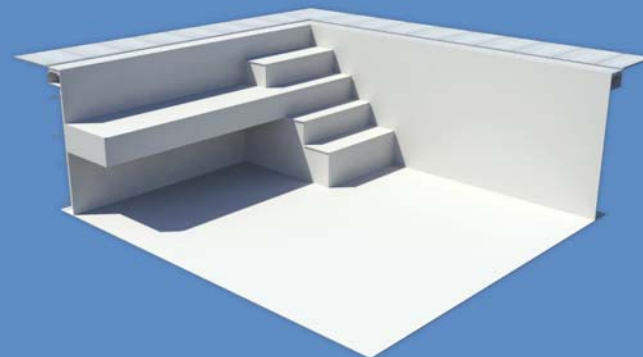
# BENCH AND WADING AREA



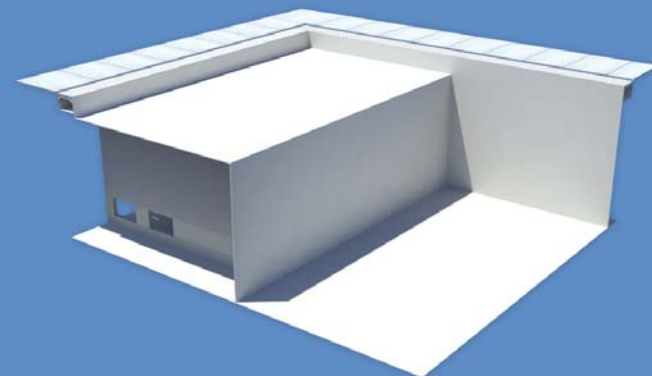
≡ BENCH STANDARD /  
SITZBANK STANDARD



≡ BENCH BLOCKOPTIK /  
SITZBANK BLOCKOPTIK



≡ WADING AREA /  
FLACHWASSERZONE



WHITE



GREY



ANTHR.



SAND



STEEL B.



LIGHT B.



CARIB. B.

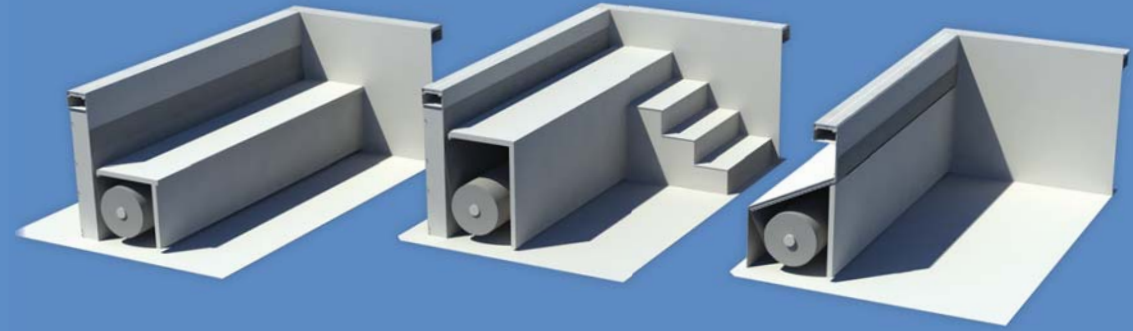








# SAFETY ROLL COVER SYSTEM



≡ ROLLCOVER BENCH /  
ROLLOBANK

≡ WADING AREA WITH STAIRS /  
FLACHWASSERZONE

≡ ROLLCOVER SHAFT /  
ROLLOSCHACHT



WHITE



GREY



ANTHR.



SAND



STEEL B.



LIGHT B.



CARIB. B.

## SLATS COLOURS | FARBEN VON SICHERHEITSABDECKUNGEN



PVC WHITE



PVC SAND



PVC BLUE



PVC GREY



PVC SOLAR



PC SOLAR



PC TRANSPARENT



PC ALU LOOK

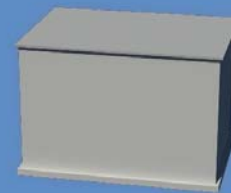




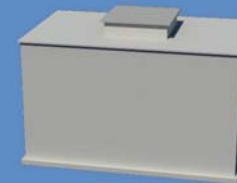




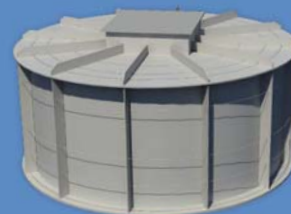
# SHAFTS AND BUFFER TANKS



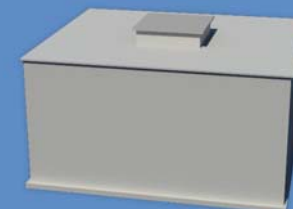
≈ SHAFT COMFORT /  
SCHACHT COMFORT



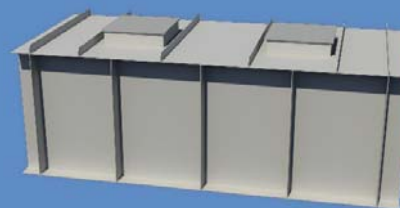
≈ SHAFTS COMFORT PLUS /  
SCHACHT COMFORT PLUS



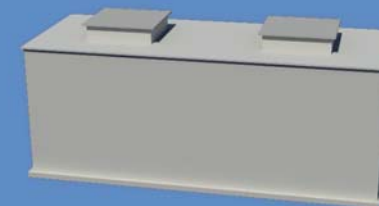
≈ BUFFER TANKS STANDARD /  
SCHWALLBEHÄLTER STANDARD



≈ BUFFER TANKS COMFORT /  
SCHWALLBEHÄLTER COMFORT

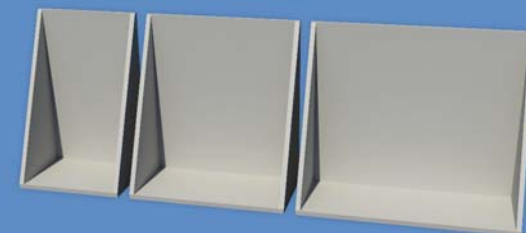


≈ COMBISHAFT STANDARD /  
KOMBISCHACHT STANDARD



≈ COMBISHAFT COMFORT /  
KOMBISCHACHT COMFORT

≈ TECHNICAL PLATES /  
TECHNIKPLATTE







Centralplast s.r.o.  
Přepychy 38  
517 32 Přepychy  
Czech Republic

OFFICE, SHOWROOM, FACTORY:  
U Mostku 496  
503 41 Hradec Králové  
Czech Republic

phone: +420 494 628 329  
web: [www.central-pool.com](http://www.central-pool.com)  
e-mail: [info@central-pool.com](mailto:info@central-pool.com)



EUROPEAN UNION  
European Regional Development Fund  
Operational Programme Enterprise  
and Innovations for Competitiveness