

AquaVac® 250

CORDLESS ELECTRIC POOL CLEANER
ROBOT NETTOYEUR ELECTRIQUE SANS FIL
ROBOT SIN CABLE PARA PISCINAS

USER MANUAL
MANUEL D'UTILISATION
MANUAL DE USUARIO



Table Of Contents

IMPORTANT SAFETY INSTRUCTIONS & WARNINGS	P.4
HOW THE ROBOT WORKS	P.7
GETTING STARTED	P.8
• Charging The Battery	P.8
• Set-Up Before Use	P.9
◦ Clip-on Rake/ Brush Assembly	P.9
◦ Adjustment of Trajectory	P.10
▪ Tube setting	P.10
▪ Bumper	P.11
• Pool Preparation	P.11
OPERATION	P.12
EMPTYING THE DEBRIS COMPARTMENT	P.14
MAINTENANCE & STORAGE	P.15
BATTERY DISPOSAL	P.15
• How to remove the battery pack	P.16
TROUBLESHOOTING	P.17

Remark: Product/parts photos/drawings in this manual are for demonstration only.
Product/parts in photos/drawings may vary with the model purchased.




IMPORTANT SAFETY INSTRUCTIONS & WARNINGS

When installing and using this electrical equipment, safety precautions should always be followed, including:

SAVE THESE INSTRUCTIONS

WARNING!

- READ AND FOLLOW ALL INSTRUCTIONS in this manual and on the equipment. Failure to do so could result in severe or fatal injuries.
- Ensure that children do not attempt to access cleaner while it is operating. Closely supervise children and pets at all times to ensure they do not play with the cleaner. This is not a TOY. Children should be kept out of reach from this robot and its accessories.
- Never allow children to operate this product.
- This robot is not intended for use by someone with reduced physical, sensory or mental capabilities or a lack of experience and knowledge unless they have been given supervision or instruction concerning use of the appliance in a safe way and understand the hazards involved.
- Make sure the robot is fully immersed in the water before operation. The minimum water level required to operate the robot must reach above the swivel head of the robot. Operating the robot when it is not immersed in the water correctly could damage the unit and void the warranty as a result.
- Maximum operating depth in water is 3 meters (10 ft).
- Operating water temperature: 5°C (41°F) –35°C (95°F)
- Only use the detachable supply unit (external adaptor) provided with this robot to charge the battery.
-  Detachable supply unit (external adaptor)
- In the United States, the external adaptor must be connected only to a supply circuit that is protected by a ground-fault circuit interrupter (GFCI). Contact a qualified electrician if you cannot verify that the circuit is protected by a GFCI. This GFCI should be tested on a routine basis. To test the GFCI, push the test button. The GFCI should interrupt power. Push reset button. Power should be restored. If the GFCI fails to operate in this manner, the GFCI is defective. If the GFCI interrupts power to the external adaptor without the test button being pushed, a ground current is flowing, indicating the possibility of an electrical shock. Do not use the external adaptor. Disconnect the external adaptor and contact the manufacturer for assistance.
- In Europe, Australia and New Zealand, the cleaner power supply unit must be supplied through a residual current device (RCD) having a rated residual operating current not exceeding 30 mA. Contact a qualified electrician if you cannot verify that the circuit is protected by a RCD.



- Do not use this robot if any damage is detected.
- Replace damaged parts as soon as possible. Only use parts certified by the distributor or manufacturer.
- Turn off the robot, disconnect the external adaptor from the power source, and unplug the external adaptor from the charging base, before detaching the robot from the charging base.
- Disconnect the robot from the supply mains and make sure the robot is powered OFF prior to servicing it such as cleaning the filter and swivel smoothing-ring.
- The battery installed is a rechargeable Li-ion battery pack. Never attempt to replace it.
- The robot is only to be recharged with the external adaptor and charging base delivered with this product.
- DO NOT handle the robot, external adaptor, and charging base while it is charging with wet limbs and without shoes.
- You should not operate this robot when people/pets are present in the water.
- DO NOT use this robot without an intact filter in place, otherwise your warranty will be voided as a result.
- Suction entrapment hazard: This robot generates suction. Do not allow hair, body, and any loose parts of your clothing to make contact with the suction hole of the robot during its operation.
- Never insert body parts, clothing and other objects into the openings and moving parts of the robot.
- DO NOT use this robot to pick up any toxic substance, flammable and combustible liquids such as gasoline, and in the presence of explosive / flammable fumes.
- Under no circumstances should you attempt to disassemble the robot and replace the impeller, motor, and battery by yourself.
- Never insert fingers and any object to touch the impeller.
- This robot shall not be used by children.
- The battery must be removed from the robot before it is scrapped.
- This robot contains a battery that are only to be removed by skilled person.
- The robot must be disconnected from the supply mains prior to the battery is removed.
- For details regarding battery disposal, refer to the section "Battery Disposal" in this manual
- The battery must be disposed safely in accordance with local ordinances or regulations.
- The robot contains a maintenance-free, rechargeable lithium-ion battery pack, which must be disposed properly. Recycling is required; please contact your local authorities for more information.
- External adaptor and charging base:
 - Never use the external adaptor and charging base for anything other than charging the battery of the robot that is supplied in the same pack.



- The external adaptor and charging base should not be used outdoors, nor should it be exposed to rain, humidity, any liquid or heat.
- The transformer (or external adaptor) should be located outside zone 1
- Keep the external adaptor and charging base out of reach of children.
- Never use the external adaptor and charging base if any damage is detected.
- DO NOT handle the external adaptor and charging base with wet hands.
- Keep the external adaptor disconnected from power when it is not in use.
- Never attempt to open the external adaptor.
- If the supply cord is damaged, it must be replaced by the manufacturer, its service agent, or an equally-qualified person in order to prevent hazards of any kind.
- Make sure the robot is completely dry before charging.

SAVE THESE INSTRUCTIONS

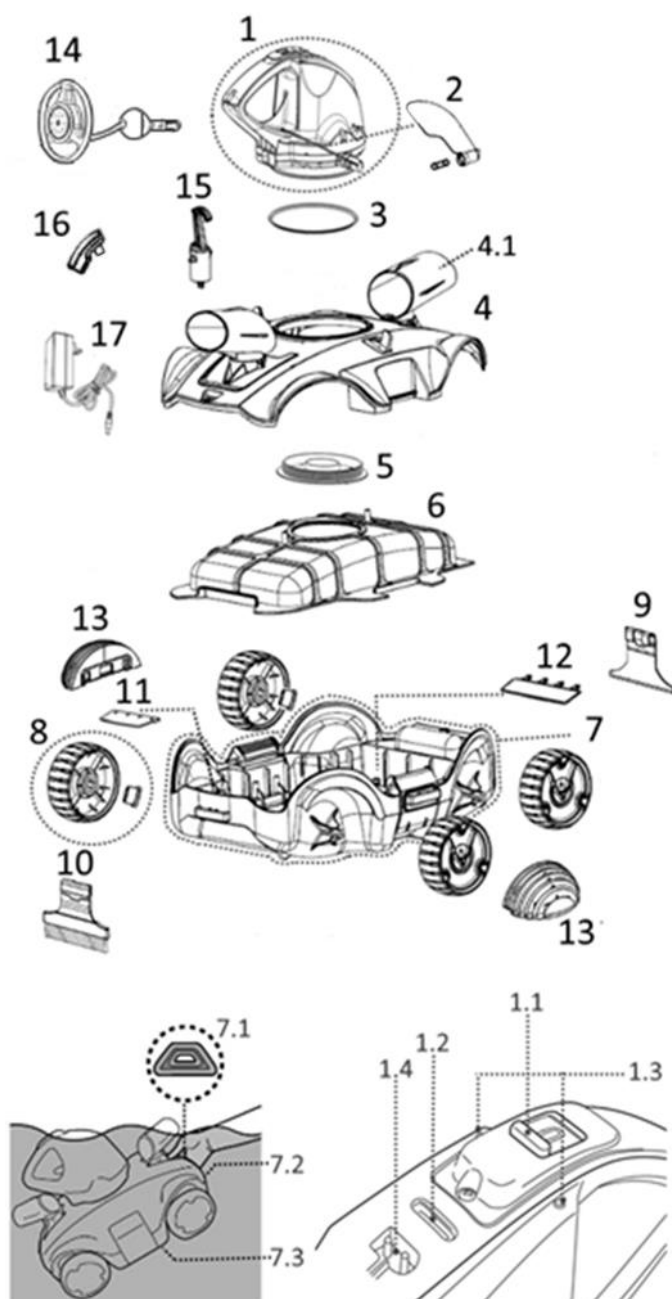
CAUTION!

- This robot is designed for underwater use only; it is not an all-purpose vacuum cleaner. DO NOT attempt to use it to clean anything other than your pool.
- Use only the original accessories delivered with this product.
- DO NOT use this robot right after pool-shocking. It is recommended to first leave the pool circulating for at least 24-48 hours.
- If you are planning on using the robot in a saltwater pool, make sure all salts are dissolved before placing it into the water.
- It is not recommended to use this robot with another automatic cleaner/cleaner simultaneously.
- Avoid picking up hard, sharp objects with this product, as they may damage the robot and filter.
- To avoid damaging the external adaptor and charging base, do not attempt to carry the robot by the cord of external adaptor, or pull the cord to disconnect it from the power source and charging base.
- Charge the robot indoors in a clean, dry area with good ventilation and away from sunlight.
- DO NOT leave the robot charged for over 10 hours.
- If the robot will not be used for an extended period, detach it from the charging base and use a damp cloth to clean and dry the robot and its accessories. Make sure to charge the robot to about 30% to 50% of the battery capacity before it is stored. Store in a well-ventilated area away from sunlight, heat, ignition sources, pool chemicals, and children. Recharge the robot every three months.
- All actions concerning the disassembly of the swivel head (ie. battery disposal) can only be carried by an authorized technician.

Above warnings and cautions are not intended to incorporate all possible instances for risks and / or severe injuries. Pool / spa owners should always exercise extra caution and common sense when utilizing the product.



HOW THE ROBOT WORKS



The robot has a water-propelling nozzle at the bottom of the swivel head. Water is first sucked in through the suction mouth at the bottom of the robot, which then goes through the filter and is discharged via the propelling nozzle. Water jetting from the nozzle propels the robot forward. Once the robot stops against an obstacle such as the pool wall, its side flap sways and its swivel head turns 180°, allowing the robot to move in the opposite direction. The robot moves in a generally straight pattern in one direction and in an arc pattern in the other direction. The robot vacuums the pool bottom as it moves, collecting debris in its compartment.

GETTING STARTED

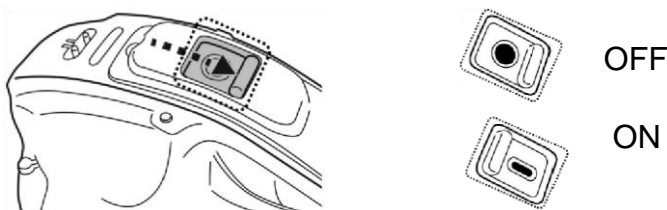
Charging The Battery

IMPORTANT NOTE: Fully charge the robot (about 5-6 hrs) before using it for the first time.

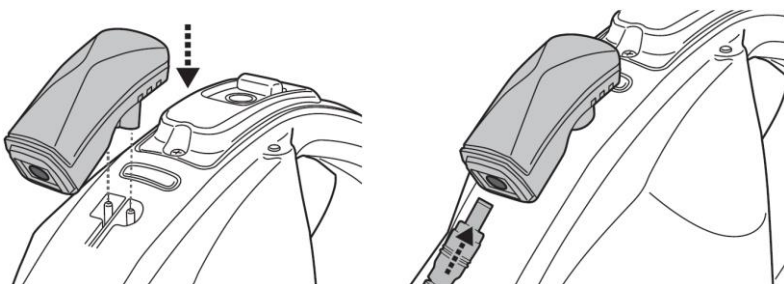
WARNING!

- Use only the original external adaptor and charging base provided.
- Make sure the robot and the charging port are clean and dry before set-up.
- Make sure the robot is off by sliding the switch to the OFF position prior to charging.

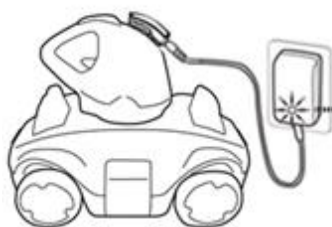
1. Place the unit on a flat surface. Slide the switch to the OFF position.



2. Place the unit on a flat surface. Plug the socket of the charging base into the built-in charging pins once they are aligned. **WARNING!** Be sure not to invert the charging base. Plug the charging cable of the external adaptor



3. Connect the external adaptor to the power source. Once the robot begins charging, the indicator light on the external adaptor will turn red.
The indicator light on the external adaptor will turn green when the robot is charged. Charge it for 5-6 hours for best performance.



RED light - Charging
GREEN light - Charged

- Immediately disconnect the external adaptor from the power source if you detect any of the following:
 - Offensive or unusual odor
 - Excessive heat



- Deformation, cracks, leaks
- Smoke

4. When charging is complete, disconnect the external adaptor from the power source and unplug the charging cable from the charging base.

IMPORTANT: Make sure to unplug the charging base from the swivel head after charging is complete.

Normally the robot can operate up to 120 minutes on a full charge.

NOTE: Clean the debris compartment regularly. Excessive debris inside the compartment increases the burden to motor operation and shortens the operating duration as a result.

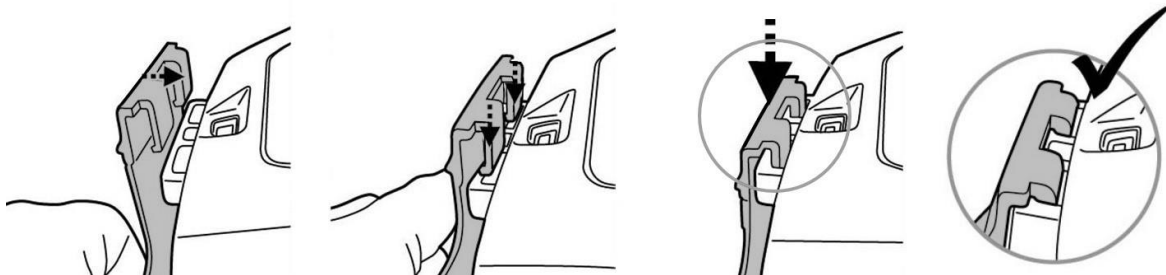
NOTE: Rechargeable lithium-ion battery is classified as a consumable item. It has a limited life and will gradually lose its capacity to hold a charge. Therefore, the running time of the robot will gradually reduce after repeated charging and discharging throughout its product life.

Once the lifespan of the battery reaches its end, refer to section “BATTERY DISPOSAL” for instructions regarding battery disposal and replacement of swivel head.

NOTE: Let the robot rest for around 30 to 40 minutes before charging it again.

Set-Up Before Use

Clip-on Rake/ Brush Assembly



TIPS: Press on the two hook ends to remove the rake/brush

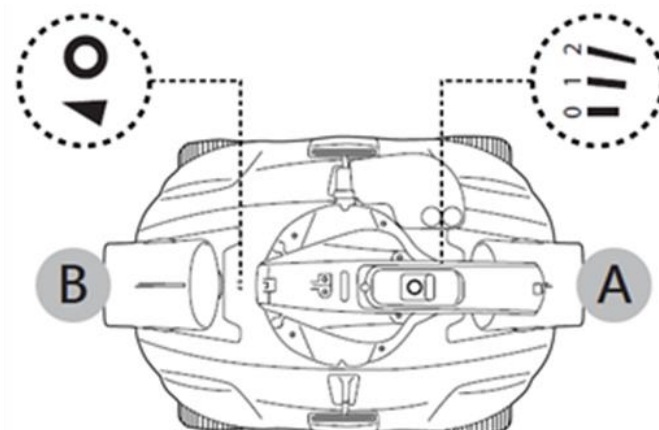


IMPORTANT NOTE: Remove rake/brush after use. Otherwise, they may deform due to constant compression, and could interrupt robot movement as a result.



Adjustment of Trajectory: Tube setting

Set the tubes A & B according to below instruction.

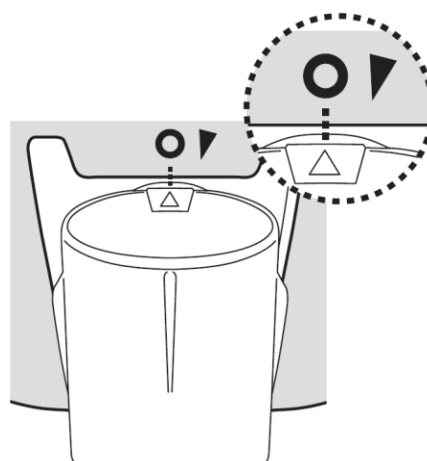


1) For pools where the shortest length is 3 meters or above

Turn the tube **A** to position “0” or “1”



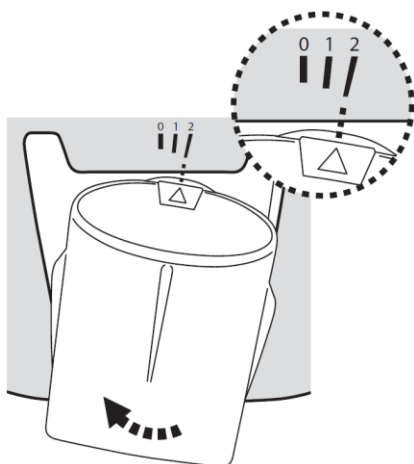
Set tube **B** in position **0**



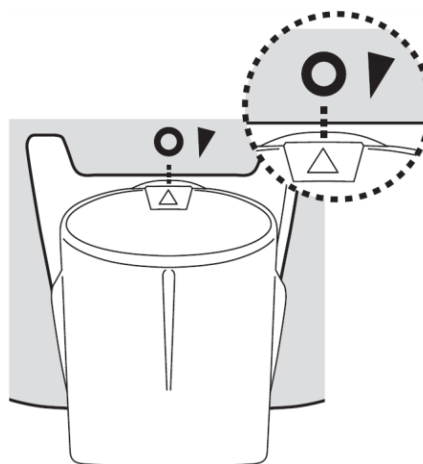
Tips: To achieve a steeper curve in trajectory, adjust the tube **A** to position “2”.

2) For pools where the shortest length is below 3 meters

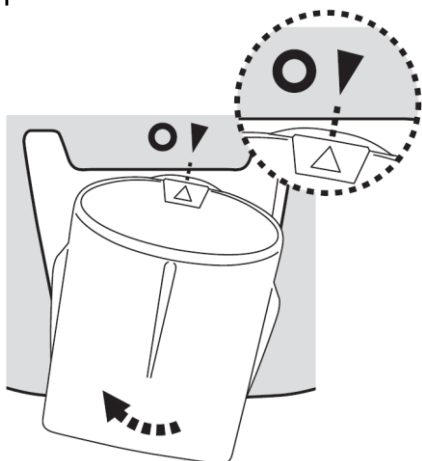
Set the tube **A** to position “2”



Set tube **B** in position **0**



NOTE: In case the robot is moving in circle or cannot cover the entire pool, set the tube B to position “▼” as below:

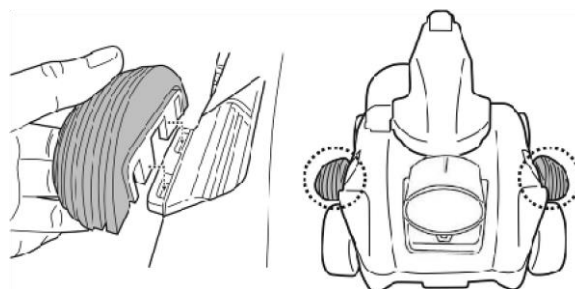


Note: You will hear a “click” sound everytime you adjust the fin.

Bumper

Use of the bumper is optional and can be applied in the following situation:

If the robot tends to follow the perimeter of a round pool, clipping a bumper on each side of the robot will eliminate this pattern.



Pool Preparation

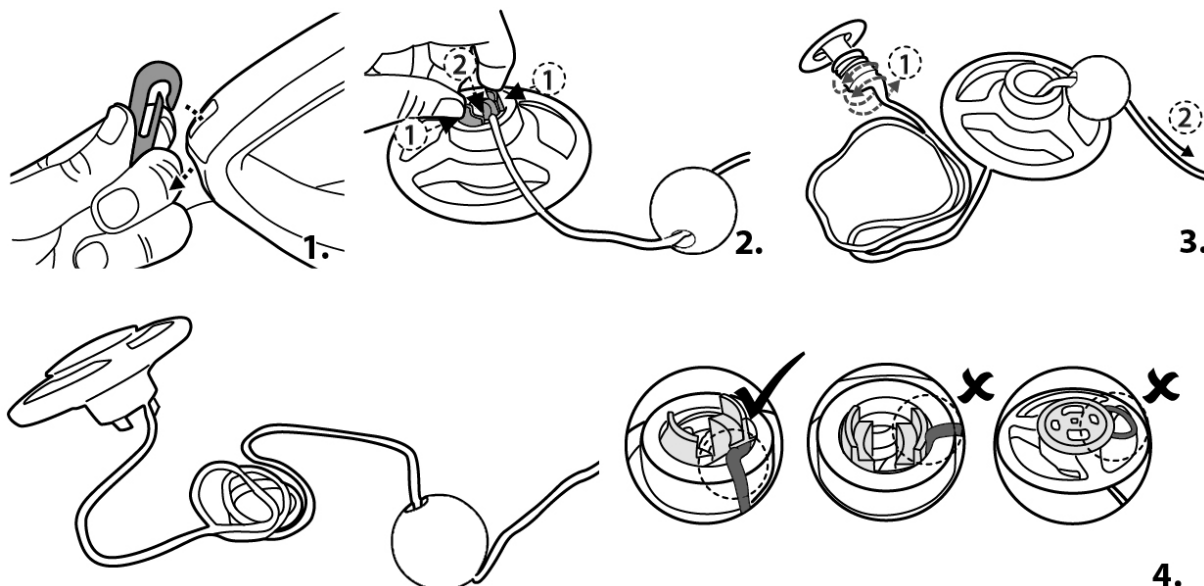
- If there are stones, roots or metal corrosion in contact with the underside of the liner, discard them prior to using the robot. If necessary, seek assistance from a qualified professional.
- If the liner is brittle, damaged or wrinkled, contact a qualified professional to perform the necessary repairs or perform a liner replacement prior to using the robot.
- Remove any pool ladder, surface skimmer, and other floating objects from the pool as they may obstruct the movement of the robot's float and, consequently, the movement of the robot also.
- If you are using a saltwater pool, make sure all salt are dissolved before placing the robot into the water.

IMPORTANT NOTE: Turn off the filtration system (as instructed in your filtration manual) at least 15 minutes prior to deploying the robot.

OPERATION

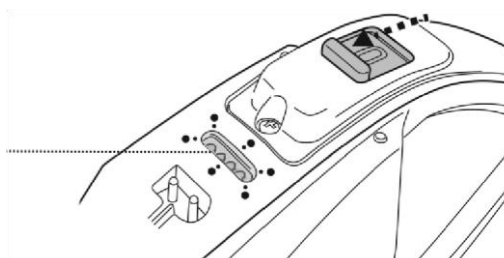
WARNING! Make sure the robot is off.

1. Bring your robot to the side of your pool. NOTE: Do not place the robot in the pool corner and against the pool wall as starting location. Attach the hook of the float to the handle of the swivel head. Press on the side clip to eject the stem from the float. Release the rope from the stem to a length equivalent to the depth of pool water plus an excess of about 0.5 meters (1.6 feet). Once the desired length has been achieved, maintain it by holding onto the rope on the stem and reattach it to the float by pressing on the side clip as shown.



2. Slide the power switch to the ON position and the power indicator lights will turn on.
ATTENTION: Motor activates only when the robot is submerged in water completely.

Power indicator lights
(Green)



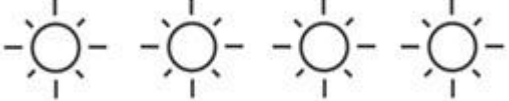

3. Immerse the robot into the water and operation will automatically begin as water level covers the sensors at the top of the swivel head. Let the robot sink to the pool floor and observe the cleaner's first forward and reversed movements across the pool bottom. If the robot runs along the pool wall instead of perpendicular to it, reposition it to make sure that its front/back faces the pool wall.

IMPORTANT NOTE: The swivel head may rotate repeatedly for a few minutes once the robot sinks to the pool bottom. This phenomenon will stop once the air trapped inside the robot is gradually discharged and the robot will begin to move regularly.



Power indicator lights:

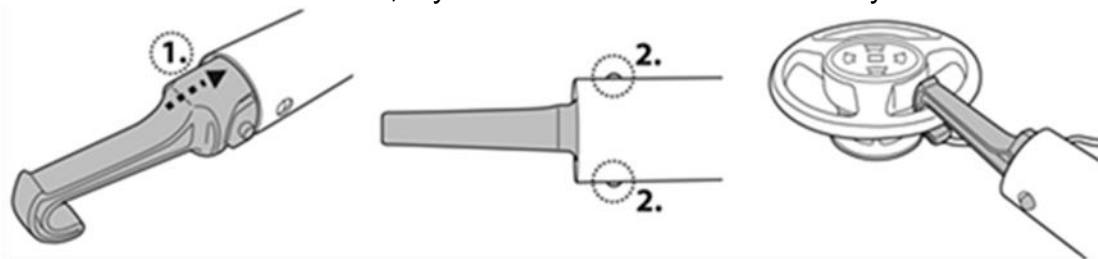
As the robot moves around the pool and collects debris, battery levels will gradually drop and the indicator lights will follow suit.

	4 lights ON	Up to 120 minutes left
	Last light blinks	Only 10 minutes of usage remains once the last light starts blinking.

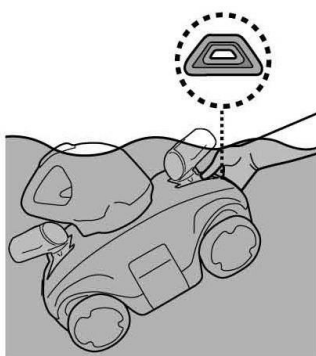
NOTE:

- Refrain from making any physical contact with both water sensors.

- To retrieve the robot from the pool, attach the hook to a telescopic pole (not provided) and use it to retrieve the float, if you are unable to retrieve with your hands.



As the robot reaches the water surface, locate the end with the red triangle (as shown in the image below) and grab onto the robot via the grip (Note: holding the other end of the robot will lead to escape of debris through the drainage outlet) to lift the cleaner to drain the water out of the robot.



- Slide the power switch OFF. Rinse the robot with fresh water after every use. DO NOT use any detergent.

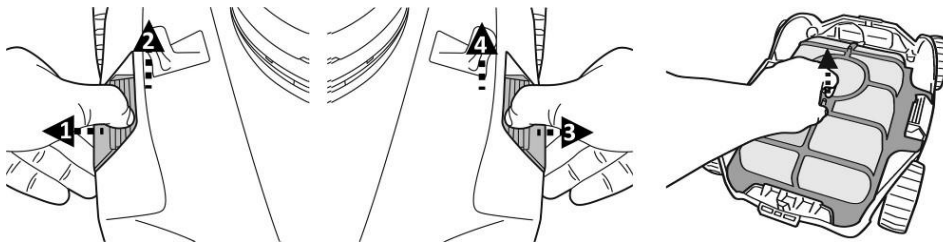
NOTE: To ensure the most efficient cleaning, when your pool is quite dirty, it is recommended to empty the debris compartment after the first 30min of operation, or whenever the robot's movement has slowed down noticeably. Then return the robot (with an emptied debris compartment) to the pool, and let it run through the remaining of its cycle.

EMPTYING THE DEBRIS COMPARTMENT

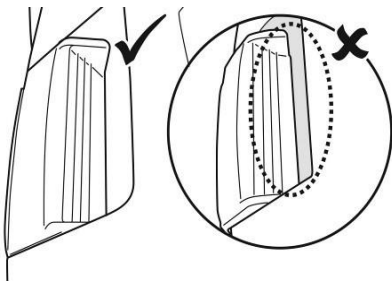
WARNING! Using the robot without its filter cover in place will VOID your warranty. In order to maximize the cleaning efficiency, clean the debris compartment and the filter cover before and after each use.

CAUTION! Before cleaning the debris compartment, make sure the robot is OFF.

1. Place the cleaner on a flat surface. Pull one side clip outwards to lift one side of the cover and repeat the steps on the other side to lift the entire top cover to expose the filter cover and filter plate.

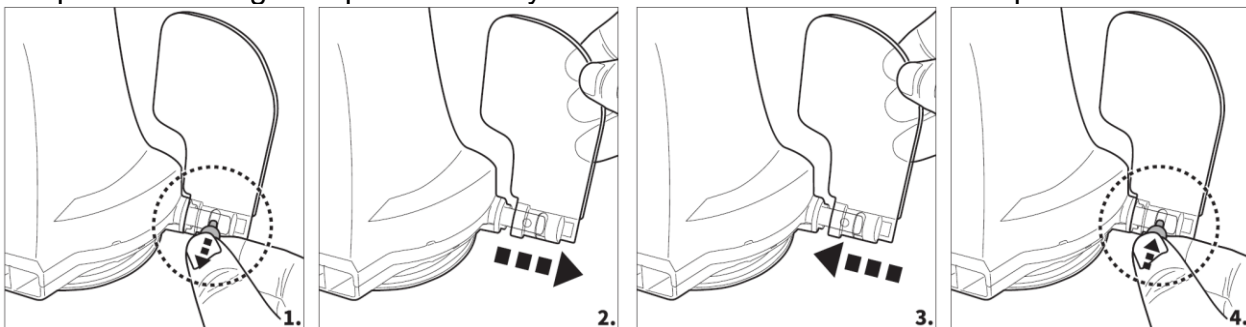


2. Detach the filter cover and remove the debris from the compartment. It is recommended to clean the filter cover net with splashing water. If brushing is deemed necessary, use only a soft brush to clean it carefully and gently to avoid any damage.
3. After cleaning, make sure that filter cover is in place and the top cover is correctly installed and secured by the side clips.



CAUTION!

- Replace a damaged filter cover immediately with a new one before the next operation.
- Replace a damaged flap immediately with a new one before the next operation.



MAINTENANCE & STORAGE

NOTE:

1. Battery discharges on its own during storage. Make sure to fully charge the robot before storage.
 2. You must recharge the battery at least once every three months when it is not in use.
 - Unplug the external adaptor from the socket and the charging cable from the charging base.
- IMPORTANT:** Make sure to unplug the charging base from the swivel head after charging is complete.
- Detach accessories from the robot. If necessary, rinse the robot and accessories with fresh water. **DO NOT** use detergent.
 - Be sure to drain the water from the robot before storage.
 - Use a damp cloth to clean and dry the robot and its accessories.
 - Store them in a well-ventilated area away from sunlight, heat, ignition sources, pool chemicals and from children. Ambient temperature for storage should be 10°C – 25°C (50°F – 77°F).
- NOTE:** A higher storage temperature may reduce the battery life.

WARNING!

- Under no circumstances should you attempt to disassemble the swivel head and replace the impeller, motor and battery by yourself.
- To replace a damaged squeegee, push it out of the cavity and replace with a new one.

CAUTION!

- Excessive heat can damage the battery and reduce the lifespan of your robot as a result.
- Consult your dealer regarding battery replacement if the following happens:
 - Battery does not charge fully.
 - Battery operation time is noticeably reduced. Observe and record the run times of the first few operations (on a full charge). Use these run times as a reference point for comparison with run times in the future.
- The battery must be removed from the robot before it is scrapped.
- The robot must be disconnected from the supply mains when the battery is being removed.
- The battery is to be disposed safely in accordance with local ordinances or regulations. **NOTE:** Incorrect maintenance may reduce the battery life and affect its capacity as a result.

BATTERY DISPOSAL

Your robot is equipped with a maintenance-free rechargeable lithium-ion battery pack, which must be disposed of properly. Recycling is required; please contact your local authority for more information.

WARNING! Never attempt to disassemble a battery pack

- Remove all personal items such as rings, bracelets, necklaces and watches when the battery pack is unwired from the robot.
- A battery can produce a short circuit current high enough to weld a ring (or similar item) to metal, causing a severe burn in the process.
- Wear complete eye protection, gloves and protective clothing when the battery pack is being removed.
- Avoid touching the wires altogether and avoid contact between them and any metal items, which could cause sparking and/or short circuit the battery.
- Never smoke or allow a spark or flame in the vicinity of the battery or the robot.



- Do not expose the battery to fire or intense heat as this may result in an explosion.

CAUTION!

If a battery leak occurs, avoid any contact with the leaking fluids and place the damaged battery in a plastic bag.

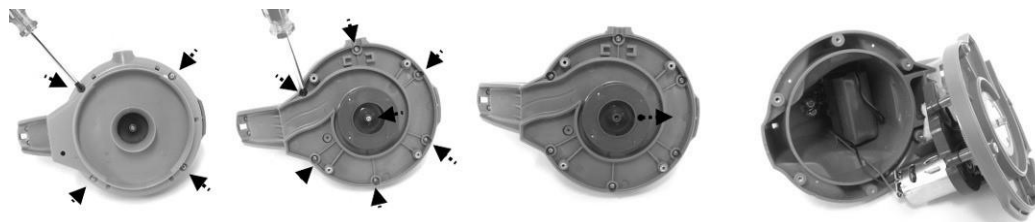
- If leaking fluids come in contact with skin and clothing, wash immediately with plenty of soap and water.
- If leaking fluids come in contact with eyes, do not rub eyes, immediately flush eyes with cool running water for at least 15 minutes and do not rub them. Seek medical attention as soon as possible.

How to remove the battery pack (To be done by authorized technician) Recommended tools (not included): Screwdriver.

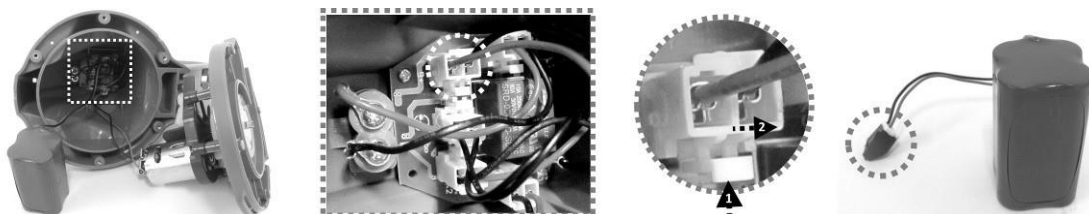
1. Follow section “EMPTYING THE DEBRIS COMPARTMENT” to release the top cover (preassembled with the swivel head). Place the cover upside down and use the screwdriver to unfasten the screw on the bottom locking plate. Turn the bottom locking plate anticlockwise to release the swivel head. Remove the swivel smoothening-ring.



2. Use the screwdriver to unscrew the 4 screws located at the bottom of the head to release the bottom plate first, then unscrew all the screws at the base as shown. Remove the impeller and pry open the base to expose the head inside.

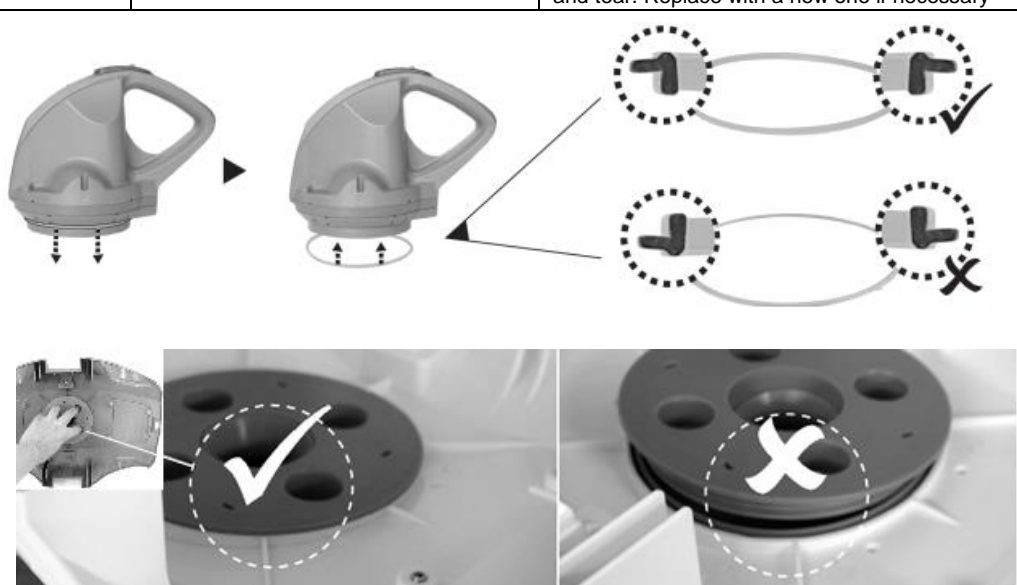


3. Remove the battery pack to expose the PCBA. To detach the battery connection wire, press on the clip of the connector to pull it out. NOTE: Wrap the connector immediately with insulating tape in order to avoid any short circuit caused by the contact of both wire terminals.



TROUBLESHOOTING

Problem	Possible Cause	Solution
Robot does not capture debris	Battery is running out	Charge the robot again.
	Impeller is jammed	Power off the robot and inspect the hole under the swivel head to see if the impeller is jammed by large debris. If necessary, contact your dealer for further instructions. WARNING! Make sure the robot is off before the unit is serviced.
	Suction mouth is clogged	Remove clogged objects from the suction mouth.
	Impeller is broken	Contact your dealer for replacement.
	Debris compartment is full	Clean both debris compartment and filter cover.
Robot stopped moving in the middle of pool but swivel head is still turning	Robot stopped by obstacle or large creases in the pool liner.	Check to see that if there is anything obstructing the cleaner. Remove the obstacle.
	Robot is stopped by suction from the main drain of pool floor	Turn off the filtration system as instructed in manual.
Swivel head rotates repeatedly	Air trapped inside the robot	The swivel head may rotate repeatedly for a few minutes once the robot sinks to the pool bottom. This phenomenon will stop once the air trapped inside the robot is gradually discharged and the robot will begin to move regularly.
Robot does not cover the entire pool	Debris compartment is full	Clean the debris compartment
	Operation time is shorter as expected	Clean the filter compartment and recharge the robot for 6 hrs
	Moving direction is interrupted by water circulation generated by filtration system	Turn off the filtration system (as instructed in filtration manual) at least 15 minutes before robot operation.
	Wheel is jammed	Check and remove debris from the wheel.
	Robot moves along the pool wall of round pool	Make sure the bumpers have been installed as instructed in manual.
	Rake / brush is deformed	Lay them under sunlight for a few hours to straighten them. If necessary, replace with a new rake / brush.
	Tube setting is not correct	Follow instructions to set the adjustable tube accordingly.
Robot moves slowly or does not move at all.	Algae renders the pool floor slippery which results in the robot going in circles.	Scrub the pool bottom and robot wheels to remove the algae
	Debris compartment is full or filter cover is clogged.	Clean the debris compartment. Flush the screen with water to remove small particles. If brush is deemed necessary, use a soft brush to clean the screen gently. Note: make sure that the filter cover is in place before next operation
	Suction mouth is clogged	Remove clogged objects from the suction mouth
	Filter cover screen is clogged	Flush the screen with water to remove small particles. If brushing is deemed necessary, use a soft brush to clean the screen gently.
	Rake/ brush is deformed	Lay them under sunlight for a few hours to straighten them. If necessary, replace with a new rake / brush. If the situation persists, use only one rake or brush in operation.
Swivel head does not turn or turn noticeably slowly	Impeller is jammed	Power off the robot and inspect the hole under the swivel head to see if the impeller is jammed by large debris. If necessary, contact your dealer for further instructions. WARNING! Make sure the robot is off before the unit is serviced.
	Side flap does not come up.	Check and remove any debris that hinders the movement of the flap.
	Swivel head bottom is jammed	Detach the swivel head and smoothening-ring in accordance with instructions of section “How to remove the battery pack” from the manual, then: - Remove trapped debris

		<p>- Verify the smoothening-ring and bottom plate are installed correctly (refer to below diagrams) Inspect the smoothening-ring for potential damages and wear and tear. Replace with a new one if necessary</p>
		
Debris escapes from the robot	Suction mouth's flap (at cleaner bottom) is damaged	Suction mouth's flap works like a door to prevent the debris from escaping from the debris compartment. Contact dealer for replacement parts and instruction.
	Debris clogged at suction mouth and prevents the flap to close.	Remove clogged debris from the suction mouth.
Debris leaks outside at the filter cover	Filter cover net is damaged	Replace with a new filter cover. Contact your dealer for replacement parts.
Float sinks	Float is broken and water leaks in	Replace with a new float. Contact your dealer for replacement parts.
Robot operation lasts shorter than advertised	Battery is not fully charged	Charge the robot for at least 6 hrs.
Robot cannot be charged / recharged	Battery is damaged	Contact dealer for battery replacement. WARNING! DO NOT replace the battery by yourself. This could result in severe or fatal injuries and the warranty will be voided as a result.
	Charging base is not completely connected with the external adaptor and robot.	Make sure that the charging base is connected with external adaptor and robot properly and completely. Refer to instruction manual.
	External adaptor is out of order	Contact dealer for replacement. WARNING! Using the wrong external adaptor will result in damaging the robot / battery and voiding the warranty as a result.

SAVE THESE INSTRUCTIONS



FCC (US)

Product: Aquavac 200 Series Cleaner

FCC Responsible Party: Hayward Industries, Inc.

400 Connell Drive, Suite 6100

Berkeley Heights, New Jersey

07922 USA

www.hayward.com

This device complies with part 15 of the FCC Rules. Operation is subject to the following two conditions: (1) This device may not cause harmful interference, and (2) this device must accept any interference received, including interference that may cause undesired operation.

Changes or modifications not expressly approved by Hayward could void the user's authority to operate this equipment.

NOTE: This equipment has been tested and found to comply with the limits for a Class B digital device, pursuant to Part 15 of the FCC Rules. These limits are designed to provide reasonable protection against harmful interference in a residential installation. This equipment generates, uses and can radiate radio frequency energy and, if not installed and used in accordance with the instructions, may cause harmful interference to radio communications. However, there is no guarantee that interference will not occur in a particular installation. If this equipment does cause harmful interference to radio or television reception, which can be determined by turning the equipment off and on, the user is encouraged to try to correct the interference by one or more of the following measures:

- Reorient or relocate the receiving antenna.
- Increase the separation between the equipment and receiver.
- Connect the equipment into an outlet on a circuit different from that to which the receiver is connected.
- Consult the dealer or an experienced radio / TV technician for help.

NOTE: This device complies with FCC and IC RF radiation exposure limits set forth for general population. This device must be installed to provide a separation distance of at least 20cm from all persons and must not be co-located or operating in conjunction with any other antenna or transmitter.

ICES (Canada)

This Class B digital apparatus complies with Canadian ICES-003.

Cet appareil numérique de la classe B est conforme à la norme NMB-003 du Canada.

The term "IC" before the certification / registration number only signifies that the Industry Canada technical specifications were met.

